



## Flowfast Quartz (4mm)

A trowel-applied, wear resistant and fast cure MMA flooring system with a robust decorative quartz finish.



### Fast Cure:

Accelerates cure time, providing a fully operational surface in just 60 minutes.



### Slip Resistant:

Adjustable, positively textured profile to minimize slip risks in wet or damp areas.



### Chemical Resistant:

Protects against acids, alkalis, caustic soda, salt solutions, oils and fats.



### Decorative:

Available in vibrant quartz colour mixes.



### Wear Resistant:

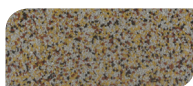
Excellent abrasion, impact and wear resistance in high traffic areas.



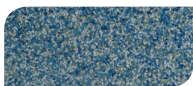
Sandstone



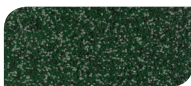
Chestnut



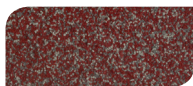
Gingerbread



Dynamic Blue



Emerald Green



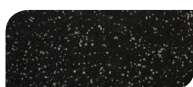
Scarlet Red



Light Grey

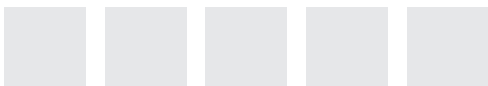


Dark Grey



Charcoal

The applied colours may differ from the examples shown. For a full colour chart and samples, contact your regional Flowcrete office.



## Technical Profile

### SLIP RESISTANCE

BS7976-2

Dry >40, Wet >35  
With slip resistant profile  
Dry >70, Wet >60

### IMPACT RESISTANCE

ISO6272 (1kg)  
ISO6272 (2kg)

>1.8m  
>1.5m

### TEMPERATURE RESISTANCE

Tolerant of sustained temperatures up to 70°C

### WATER PERMEABILITY

Karsten Test

Nil (Impermeable)

### COMPRESSIVE STRENGTH

BS6319

60 N/mm<sup>2</sup>

### FLEXURAL STRENGTH

BS6319

20 N/mm<sup>2</sup>

### TENSILE STRENGTH

BS6319

15 N/mm<sup>2</sup>

### ABRASION RESISTANCE

BS8204-2

Class AR1

### BOND STRENGTH

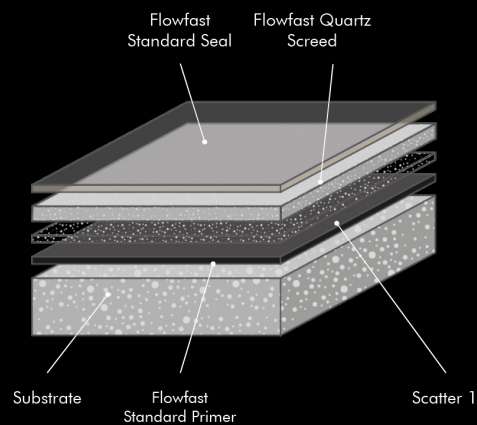
>1.5MPa\*

### SPEED OF CURE (PER LAYER)

Full Traffic & Chemical  
Cure

1 Hour

\*Assumes concrete compressive strength is greater than 25 N/mm<sup>2</sup>



\*\*Cure times at temperatures between 0–30°C can be achieved by altering the quantity of catalyst used. For applications falling outside of this temperature range, please contact your local Flowcrete Technical Department.

## Model Specification

<b>System</b>	Flowfast Quartz
<b>Finish</b>	Satin
<b>Thickness</b>	4mm
<b>Colour</b>	See standard colour chart
<b>Manufacturer</b>	Flowcrete SA (Pty) Ltd

Preparatory work and application in accordance with manufacturer's instructions.

## Products Included In This System

<b>Primer</b>	Flowfast Standard Primer
<b>Scatter</b>	Scatter 1
<b>Screed</b>	Flowfast Quartz Screed
<b>Sealer</b>	Flowfast Standard Seal
<b>Catalyst</b>	Flowfast BPO Catalyst

## Substrate Requirements

Concrete or screed substrate should be a minimum of 25 N/mm<sup>2</sup>, free from laitence, dust and other contamination. Substrate should be dry to 75% RH as per BS8204.

## Installation Service

The installation should be carried out by an Approved Flowcrete Applicator. For details of our Approved Applicators, contact your regional Flowcrete office. Detailed application instructions are available upon request.

## Aftercare, Cleaning & Maintenance

Clean regularly using a single or double headed rotary scrubber drier in conjunction with a mildly alkaline detergent.

## Environmental Considerations

The finished system is assessed as non-hazardous to health and the environment. The long service life and seamless surface reduce the need for repairs and maintenance. Environmental and health considerations are controlled during manufacture and application of the products by Flowcrete staff and fully trained application teams.

## Focus on the Floorzone

Flowcrete is a market leader in specialist industrial and commercial flooring. Systems available include: floor screeds, surface damp proof membranes, decorative flooring, seamless terrazzo, car park deck coatings, tank lining systems... to name just a few. Our objective is to satisfy your Floorzone needs.

## Warranty

Flowcrete products are guaranteed against defective materials and manufacture and are sold subject to our standard 'Warranty, Terms and Conditions of Sale', copies of which can be obtained on request. Warranty does not cover suitability, fit for purpose or any consequential or related damages. Please review warranty in detail before installing the products.

[02/08/17]