

Flowfresh SRQ Ultra (4-5mm)

An attractive coloured quartz system developed with tough and durable polyurethane hybrid technology.



Thermal Shock Resistant:

Resistant to intermittent temperatures of up to 120°C.



Speed of Cure:

Fast return to service.



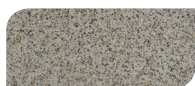
Hygienic:

Contains Polygiene® - an antimicrobial additive that kills up to 99.9% bacteria.



Slip Resistant:

Textured, anti-slip surface.



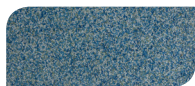
Sandstone



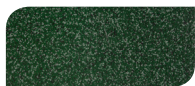
Chestnut



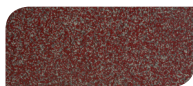
Gingerbread



Dynamic Blue



Emerald Green



Scarlet Red



Light Grey



Dark Grey



Charcoal

The applied colours may differ from the examples shown.
For a full colour chart and samples, contact your regional Flowcrete office.



Technical Profile

FIRE RESISTANCE

BS476-7	Class 2
---------	---------

TEMPERATURE RESISTANCE

Intermittent Spillages: Up to 100°C
Constant Heat: Up to 75°C

WATER PERMEABILITY

Karsten Test	Nil (Impermeable)
--------------	-------------------

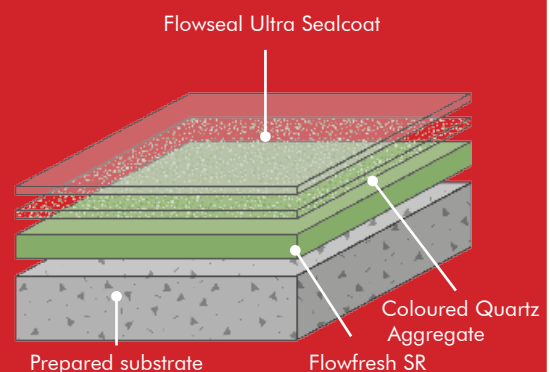
SLIP RESISTANCE

BS 6677-1 Pendulum Slip Test	Dry 100 Wet 70
---------------------------------	-------------------

ABRASION RESISTANCE

ASTM D4060 Taber Abrader (1kg load using H22 wheels)	25mg loss per 1000 cycles
--	---------------------------

SPEED OF CURE**	10°C	20°C	30°C
Light Traffic	20 hrs	14 hrs	12 hrs
Full Traffic	24 hrs	18 hrs	12 hrs
Full Chemical Cure	7 days	5 days	5 days



**Cure times at temperatures between 0-30°C can be achieved by altering the quantity of catalyst used.
For applications falling outside of this temperature range, please contact your local Flowcrete Technical Department.

Model Specification

System	Flowfresh SRQ Ultra
Finish	Textured
Thickness	4-5mm
Colour	See standard colour chart
Manufacturer	Flowcrete SA (Pty) Ltd

Preparatory work and application in accordance with manufacturer's instructions.

Products Included In This System

Screed	Flowfresh SR
Scatter	Coloured Quartz
Sealcoat	Flowseal Ultra Clear

Substrate Requirements

Concrete or screed substrate should be a minimum of 25 N/mm², free from laitence, dust and other contamination. Substrate should be dry to 75% RH as per BS8204.

Installation Service

The installation should be carried out by an Approved Flowcrete Applicator. For details of our Approved Applicators, contact your regional Flowcrete office. Detailed application instructions are available upon request.

Aftercare, Cleaning & Maintenance

Clean regularly using a single or double headed rotary scrubber drier in conjunction with a mildly alkaline detergent.

Environmental Considerations

The finished system is assessed as non-hazardous to health and the environment. The long service life and seamless surface reduce the need for repairs and maintenance. Environmental and health considerations are controlled during manufacture and application of the products by Flowcrete staff and fully trained application teams.

Focus on the Floorzone

Flowcrete is a market leader in specialist industrial and commercial flooring. Systems available include: floor screeds, surface damp proof membranes, decorative flooring, seamless terrazzo, car park deck coatings, tank lining systems... to name just a few. Our objective is to satisfy your Floorzone needs.

Polygiene® and HACCP International

Flowfresh flooring systems are antimicrobial to ISO 22196 standard, owing to the inclusion of Polygiene®, an antimicrobial additive incorporated in the formulation. The Flowfresh range of floor systems is HACCP International certified as safe for use in food environments.

Warranty

Flowcrete products are guaranteed against defective materials and manufacture and are sold subject to our standard 'Warranty, Terms and Conditions of Sale', copies of which can be obtained on request. Warranty does not cover suitability, fit for purpose or any consequential or related damages. Please review warranty in detail before installing the products.

06/04/2017