



## FLOWFRESH

- HACCP International certified antimicrobial cementitious polyurethane floor coating systems, ideal for use in areas where hygiene is critical.

# Flowfresh Range Technical Profile



Flowfresh represents a new generation of performance antimicrobial flooring based on the use of silver, in partnership with Polygiene®, that kills up to 99.9% of bacteria on contact.

Silver is a natural element known for its ability to purify and protect from bacterial infections – and provides an attractive, environmentally friendly alternative to chemically manufactured antimicrobials.

Offering total protection, a continuous migration of silver ions are delivered to the contact surface from where they attack gram positive and gram negative bacteria and viruses. This technology remains active for the lifetime of the floor, even when damaged or worn unlike coatings or surface treatments.

## Application Suitability



Food & Beverage



Meat & Fish



Bakeries & Confectionery



Food Preparation & Kitchens



Hospitals & Healthcare



Pharmaceutical

## Resistance Chart

BACTERIAL RESISTANCE				CHEMICAL RESISTANCE*			
SARS-CoV	✓	Salmonella Typhi	✓	Hydrochloric Acid	✓	Methanol	✓
MRSA	✓	Enterococcus Faecalis	✓	Sulphuric Acid	✓	Sugar Syrups	✓
E-coli	✓	Staphylococcus Aureus	✓	Citric Acid	✓	Caustic Soda	✓
Listeria	✓	Streptococcus Pyogenes	✓	Acetic Acid	✓	Petrol	✓
C.difficile	✓	Pseudomonas Aeruginosa	✓	Lactic Acid	✓	Oil Ingredients	✓
Proteus Vulgaris	✓	Campila Bacta	✓	Phosphoric Acid	✓	Detergents	✓

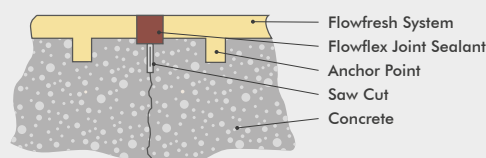
\*A chemical resistance chart is available on request.

# Complementary Products

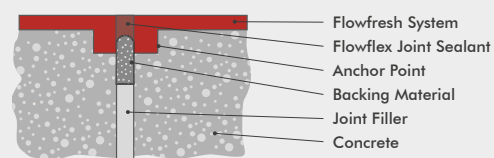
	DESCRIPTION	USES
<b>Flowprime</b>	A 2-component low viscosity epoxy resin primer for cementitious substrates.	Applied to screeds prior to overcoating with resin floor finishes.
<b>Flowfresh Primer</b>	A 3-component, polyurethane scratch coat/primer for concrete and cementitious substrates. Flowfresh Primer will bond to surface dry substrates that have a Relative Humidity up to 97% (to BS 8204).	For priming concrete and screeds, prior to overcoating with the Flowfresh flooring system.
<b>Flowfresh Coating</b>	A 4-component water based polyurethane coating.	Used as a sealer coat from Flowfresh WR or as an alternative sealer for Flowfresh HF.
<b>Super Satin</b>	A 2-component waterborne polyurethane formulated to provide an ultra-durable clear coating with a matt finish.	Used as a sealer coat where a matt finish is essential.
<b>Flowseal Ultra</b>	A 2-component fast curing polyurea sealer with good UV stability.	Used as a fast curing UV stable sealer for flake and quartz broadcast systems. Or as a concrete coating with high abrasion & wear resistance.
<b>Hydraseal DPM</b>	A 2-component, solvent-free, epoxy resin primer for damp cementitious substrates with a Relative Humidity up to 100% (BS 8204).	Used as a primer for very damp substrates (with no visible surface moisture) where other primers are not suitable.
<b>Flowflex HM</b>	A single component moisture cured polyurethane joint sealant.	To strengthen and protect limited movement floor joints.

## Joint Details

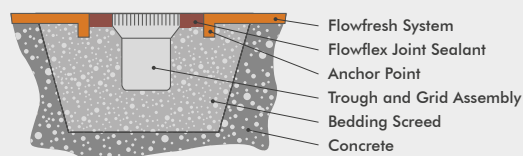
Typical (induced) Movement Joint



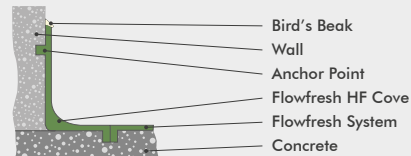
Typical (expansion) Movement Joint



Typical Drainage Channel Arrangement



Typical Floor to Wall Detail



# Flowfresh SL & MF (2–4mm)

Smooth, matt polyurethane screeds for use in dry areas subject to light-medium traffic.

Best suited to packaging areas and processing zones subject to light-medium foot and wheeled traffic, these trowel applied systems deliver a seamless joint-free finish.



### Chemical Resistant:

Protects against the majority of acids used in manufacturing processes.



### Abrasion Resistant:

Holds its own against impact, traffic and chemical attack.



### Hygienic:

Contains Polygiene® - an antimicrobial additive that kills up to 99.9% bacteria.



### Easy to Clean:

Minimal joints makes this flooring easy to sterilise.



### Low Odour:

Improved air quality during installation and beyond.

## Colours



Cream



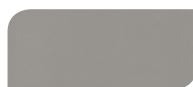
Yellow Ochre



Sand Yellow



Tomato Red



Signal Grey



Signal Green



Dusty Grey



Light Blue

The applied colours may differ from the examples shown. For a full colour chart and samples, contact your local Flowcrete office.

## Technical Profile

### THICKNESS

2mm (SL)  
3–4mm (MF)

### FIRE RESISTANCE

BS476-7

Class 2

### TEMPERATURE RESISTANCE

5°C to 65°C (SL)  
-5°C to 70°C (MF @ 3mm), -15°C to 90°C (MF @ 4mm)

### WATER PERMEABILITY

Karsten Test

Nil (Impermeable)

### SLIP RESISTANCE

TRRL Pendulum Slip Test

Dry >70  
Wet >25

### COMPRESSIVE STRENGTH

BS6319

>50 N/mm<sup>2</sup>

### FLEXURAL STRENGTH

BS6319

>20 N/mm<sup>2</sup>

### TENSILE STRENGTH

BS6319

>12 N/mm<sup>2</sup>

### BOND STRENGTH

>1.5 MPa\*

### COEFFICIENT OF THERMAL EXPANSION

ASTM C531

$5.70 \times 10^{-5} \text{ }^{\circ}\text{C}^{-1}$

### SPEED OF CURE

10°C

20°C

30°C

Light Traffic

36 hrs

24 hrs

12 hrs

Full Traffic

72 hrs

48 hrs

24 hrs

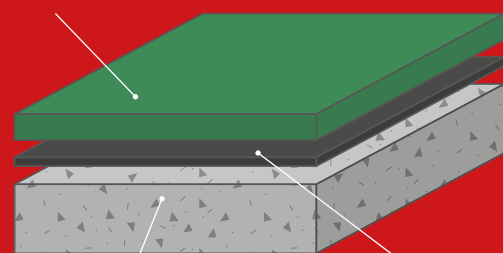
Full Chemical Cure

10 days

7 days

6 days

Flowfresh SL / MF



Prepared Substrate

Flowfresh Primer / Flowprime

\*Assumes concrete compressive strength is greater than 25N/mm<sup>2</sup>





# Application Suitability

Light - Medium Traffic 2mm	✓
Medium - Heavy Traffic 3–4mm	✓
Industrial Kitchens / Semi Dry Areas	✓
Packaging Areas	✓
Loading Bays	✓
Laboratories / Quality Control	✓
Dispensaries	✓
Cold Stores (-15°C)	✓ (MF)

## Application Suitability

Dry Process (Med/Heavy Traffic)	✓
Wet Process (Med/Heavy Traffic)	✓
Industrial Kitchens / Wash Areas	✓
Packaging Areas	
Chemical / Solvent Stores	✓
Loading Bays	✓
Laboratories / Quality Control	
Dispensaries	
Cold Stores / Freezers	✓



# Flowfresh RT (6–9mm)

A slip-resistant polyurethane screed for use in wet areas subject to high volumes of traffic.

Best suited to wet processing zones subject to high volumes of foot and wheeled traffic, this trowel applied 6–9mm system delivers a seamless joint-free matt finish.



### Heat Resistant:

Resistant to temperatures of up to 120°C.



### Slip Resistant:

Impressive anti-slip profile in dry and wet conditions.



### Hygienic:

Contains Polygiene® - an antimicrobial additive that kills up to 99.9% bacteria.



### Chemical Resistant:

Protects against the majority of acids used in manufacturing processes.



### Durable:

Holds its own against impact as well as heavy traffic.

## Colours



Cream



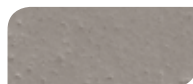
Yellow Ochre



Sand Yellow



Tomato Red



Signal Grey



Signal Green



Dusty Grey



Light Blue

## Technical Profile

### THICKNESS

6–9mm

### FIRE RESISTANCE

BS476-7

Class 2

### TEMPERATURE RESISTANCE

-25°C to 100°C (@ 6mm), -45°C to 120°C (9mm)

### WATER PERMEABILITY

Karsten Test

Nil (Impermeable)

### SLIP RESISTANCE

TRRL Pendulum Slip Test

Dry >80

Wet >35

### COMPRESSIVE STRENGTH

BS6319

>60 N/mm<sup>2</sup>

### FLEXURAL STRENGTH

BS6319

>20 N/mm<sup>2</sup>

### TENSILE STRENGTH

BS6319

>10 N/mm<sup>2</sup>

### BOND STRENGTH

>1.5 MPa\*

### COEFFICIENT OF THERMAL EXPANSION

ASTM C531

$3.74 \times 10^{-5} \text{ }^{\circ}\text{C}^{-1}$

### SPEED OF CURE

10°C

20°C

30°C

Light Traffic

36 hrs

24 hrs

12 hrs

Full Traffic

72 hrs

48 hrs

24 hrs

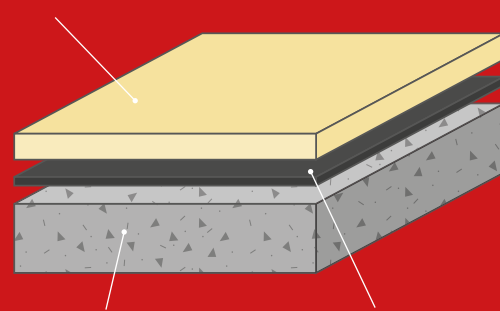
Full Chemical Cure

10 days

7 days

6 days

Flowfresh RT



Prepared Substrate

Flowfresh Primer / Flowprime

\*Assumes concrete compressive strength is greater than 25N/mm<sup>2</sup>

The applied colours may differ from the examples shown. For a full colour chart and samples, contact your local Flowcrete office.

## Colours



Cream



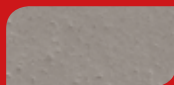
Yellow Ochre



Sand Yellow



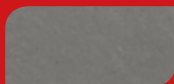
Tomato Red



Signal Grey



Signal Green



Dusty Grey



Light Blue

The applied colours may differ from the examples shown. For a full colour chart and samples, contact your local Flowcrete office.

## Technical Profile

### FIRE RESISTANCE

BS476-7

Class 2

### TEMPERATURE RESISTANCE

Intermittent Spillages: Up to 100°C  
Constant Heat: Up to 90°C

### WATER PERMEABILITY

Karsten Test

Nil (Impermeable)

### ABRASION RESISTANCE

ASTM D4060  
Taber Abrader (1kg load  
using H22 wheels)

25mg loss per 1000 cycles

### SPEED OF CURE

Light Traffic

10°C

36 hrs

20°C

24 hrs

30°C

12 hrs

Full Traffic

72 hrs

48 hrs

24 hrs

Full Chemical Cure

10 days

7 days

6 days

## Flowfresh WR (6–9mm)

Used for coving and wall rendering, Flowfresh WR is an antimicrobial, chemical resistant polyurethane.

The fine textured finish provides an attractive speckled finish while delivering high performance in wet or dry heavy duty food and beverage production environments.



Contains Polygiene® for hygiene



Resistant to hot steam cleaning



Impressive chemical resistance



Durable against impact and abrasion



## Technical Profile

### FIRE RESISTANCE

BS476-7

Class 2

### TEMPERATURE RESISTANCE

Up to 90°C

### WATER PERMEABILITY

Karsten Test

Nil (Impermeable)

### SLIP RESISTANCE

TRRL Pendulum Slip Test

Dry >56  
Wet >45 (dependent on aggregate)

### COMPRESSIVE STRENGTH

BS6319

>50 N/mm<sup>2</sup>

### FLEXURAL STRENGTH

BS6319

>20 N/mm<sup>2</sup>

### TENSILE STRENGTH

BS6319

>10 N/mm<sup>2</sup>

## Flowfresh Ultra Flakes (4mm)

Flowfresh Ultra Flakes is a decorative finish that provides an attractive yet highly functional floor.

The flaked finish is ideally suited to front-of-house and commercial environments where hygiene is critical.



Contains Polygiene® for hygiene



Decorative, flaked aesthetic



Slip, chemical and abrasion resistant



High performance, durable finish

## Colours



Domino



Cobblestone



Quicksilver



Scarlett



Desert Tan



Ice Blue

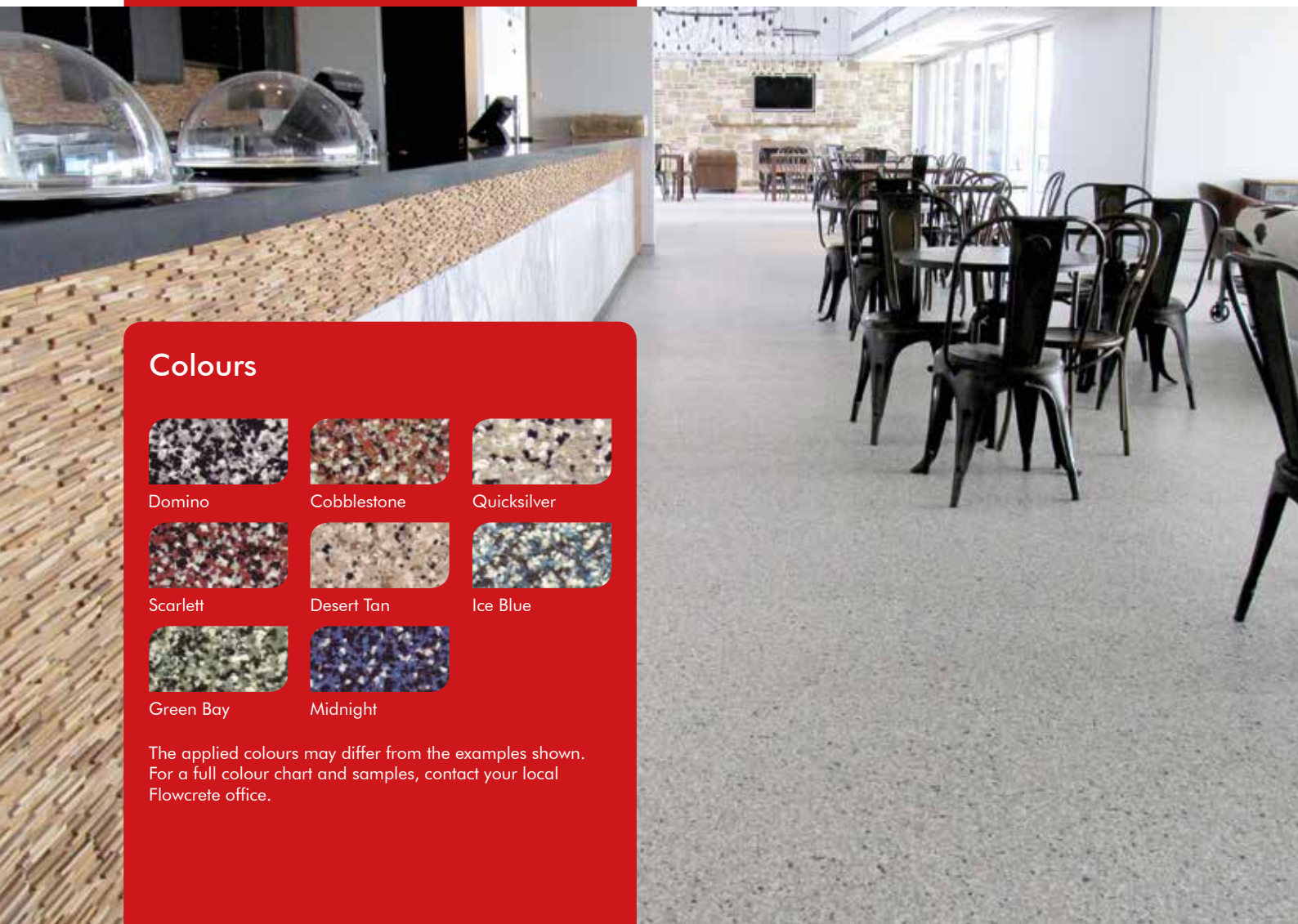


Green Bay



Midnight

The applied colours may differ from the examples shown. For a full colour chart and samples, contact your local Flowcrete office.



## Flowfresh SR Ultra Colours



Cream



Yellow Ochre



Sand Yellow



Tomato Red



Signal Grey



Signal Green



Dusty Grey



Light Blue

## Flowfresh SRQ Ultra Colours



Sandstone



Chestnut



Gingerbread



Dynamic Blue



Emerald Green



Scarlet Red



Light Grey



Dark Grey



Charcoal

The applied colours may differ from the examples shown.  
For a full colour chart and samples, contact your local  
Flowcrete office.





## Technical Profile

### FIRE RESISTANCE

BS476-7

Class 2

### TEMPERATURE RESISTANCE

Intermittent Spillages: Up to 100°C

Constant Heat: Up to 75°C

### SLIP RESISTANCE

BS 6677-1

Pendulum Slip Test

Dry 100

Wet 70

### ABRASION RESISTANCE

ASTM D4060

Taber Abrader (1kg load  
using H22 wheels)

25mg loss per 1000 cycles

### SPEED OF CURE

10 °C

20 °C

30 °C

Light Traffic

20 hrs

14 hrs

12 hrs

Full Traffic

24 hrs

18 hrs

12 hrs

Full Chemical Cure

7 days

5 days

5 days

## Flowfresh SR Ultra (4–5mm)

A high performance polyurethane system, incorporating a unique antimicrobial additive.

Flowfresh SR Ultra delivers a durable surface underfoot that resists intermittent temperatures of up to 122°C for an easy-to-clean, hygienic finish underfoot.



Contains Polygiene® for hygiene



Freeze/thaw resistant



Resistant to chemicals and traffic



Fast return to service

## Flowfresh SRQ Ultra (4–5mm)

An attractive coloured quartz system developed with tough and durable polyurethane hybrid technology.

Containing Polygiene®, Flowfresh SRQ Ultra is ideally suited to the food & beverage industry, including kitchens, manufacturing facilities and other heavy duty environments.



Contains Polygiene® for hygiene



Textured, anti-slip surface



Thermal shock resistant



Withstands high mechanical stress

## Technical Profile

### FIRE RESISTANCE

BS476-7

Class 2

### TEMPERATURE RESISTANCE

Intermittent Spillages: Up to 100°C

Constant Heat: Up to 75°C

### WATER PERMEABILITY

Karsten Test

Nil (Impermeable)

### SLIP RESISTANCE

BS 6677-1

Pendulum Slip Test

Dry 100

Wet 70

### ABRASION RESISTANCE

ASTM D4060

Taber Abrader (1kg load  
using H22 wheels)

25mg loss per 1000 cycles

### SPEED OF CURE

10 °C

20 °C

30 °C

Light Traffic

20 hrs

14 hrs

12 hrs

Full Traffic

24 hrs

18 hrs

12 hrs

Full Chemical Cure

7 days

5 days

5 days



## Flowcrete

World leader in seamless resin flooring solutions and other specialist coatings.

### Africa

South Africa	+27 31 701 0017	southafrica@flowcrete.com
--------------	-----------------	---------------------------

### Asia Pacific (APAC)

Australia	+61 7 3205 7115	australia@flowcrete.com
Bangladesh	+603 6277 9575	bangladesh@flowcrete.com
Hong Kong	+852 2795 0478	hongkong@flowcrete.com
Indonesia	+62 21 252 3201	indonesia@flowcrete.com
Korea	+60 3 6277 9575	korea@flowcrete.com
Malaysia	+60 3 6277 9575	asia@flowcrete.com
New Zealand	+64 7 541 1221	newzealand@flowcrete.com
Pakistan	+60 3 6277 9575	pakistan@flowcrete.com
Philippines	+63 2 834 6506	philippines@flowcrete.com
Singapore	+65 6848 7166	singapore@flowcrete.com
Taiwan	+60 3 6277 9575	taiwan@flowcrete.com
Thailand	+66 2539 3424	thailand@flowcrete.com
Vietnam	+84 28 6287 0846	vietnam@flowcrete.com

## Europe & Middle East (EME)

Bulgaria	+359 898 61 58 31	bulgaria@flowcrete.com
Denmark	+46 435 40 01 10	denmark@flowcrete.com
France	+33 1 60 61 74 42	france@flowcrete.com
Italy	+39 339 4853258	italy@flowcrete.com
Norway	+47 6486 0830	norway@flowcrete.com
Poland	+48 22 879 8907	poland@flowcrete.com
Romania	+40 766 596 991	romania@flowcrete.com
Russia	+7 916 931 3513	russia@flowcrete.com
Spain	+34 937 07 0872	spain@flowcrete.com
Sweden	+46 435 40 01 10	sweden@flowcrete.com
Turkey	+90 212 2946570	turkey@flowcrete.com
UAE	+971 4 347 0460	uae@flowcrete.com
UK	+44 (0) 1270 753 000	uk@flowcrete.com

### India

India	+91 44 40176600	india@flowcrete.com
-------	-----------------	---------------------

## North America

Canada	+1 877-210-2444	canada@flowcrete.com
Mexico	+55 44 40 94 00	mexico@flowcrete.com
USA	+1 513-943-4225	americas@flowcrete.com