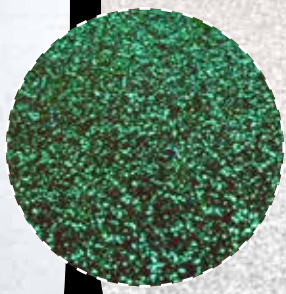
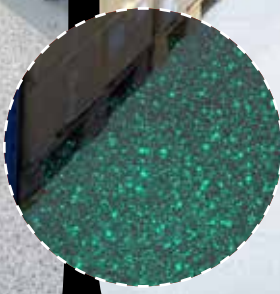
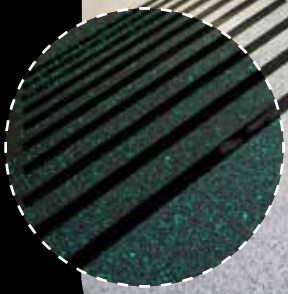


## LIGHT UP YOUR FLOOR







WITH FLOWCRETE'S

GLOW-IN-THE-DARK FLOORING



Flowcrete's brand new innovative glow-in-the-dark floor coating system is not only decorative — it also provides durability and safety when in low light conditions.

Available both in standard, and fast-turnaround formulations, Flowcrete's Glow flooring is suited to a range of commercial and industrial applications.

-  Delivers a decorative finish in commercial applications
-  MMA formulation available for fast turnaround flooring projects
-  Can be overlaid onto existing flooring for renovation projects
-  Improves safety by aiding navigation in low light conditions
-  Hard-wearing as well as scratch & chemical resistant
-  Seamless finish that is easy to clean & maintain

## WHY CHOOSE FLOWCRETE'S

### GLOW-IN-THE-DARK FLOORING

Flowcrete's glow-in-the-dark flooring is not just a decorative finish, it delivers a range of performance benefits...



The flakes illuminate to provide a safety feature for emergency staircases and walkways

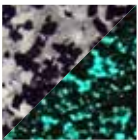


A stunning decorative flaked finish available in a range of attractive swatches for design flexibility

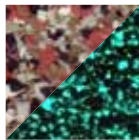


Durable enough to hold its own against impact as well as abrasion associated with heavy traffic

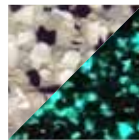
### Standard Colours



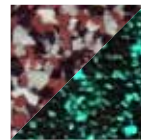
Domino



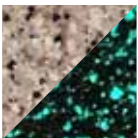
Cobblestone



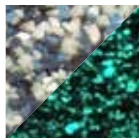
Quicksilver



Scarlett



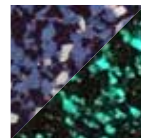
Desert Tan



Ice Blue



Green Bay



Midnight

## WHAT IS MMA?

A quick-cure formulation of Flowcrete's glow-in-the-dark floor coating system, based on Methyl Methacrylate (MMA) technology, is available for fast-track flooring installations.

Because of the fast cure time of the material, MMA flooring offers clients a reduction in downtime and minimal loss to operations. MMA flooring is non-toxic and extremely low in VOC.

Unlike labour intensive trowel applied resin systems, MMA flooring can be flow applied allowing large areas to be installed at a significantly faster rate whilst ensuring a quality finish free of trowel marks.

After installation, the material is not susceptible to staining or discolouration and can be easily cleaned with a damp mop with no requirement for labour intensive and costly steam cleaning methods.

In turn, this ensures low long-term lifecycle costs to the client through a reduced maintenance and care programme.

Should renovation be required, a major benefit of MMA flooring is that end of life MMA floors can be easily and quickly refurbished with another MMA floor finish.

TALK TO  
THE FLOORING  
TEAM TODAY

To arrange your free flooring consultation, get in touch!

+27 31 701 0017 (Durban)

+27 11 394 1980 (Johannesburg)

+27 21 385 0653 (Cape Town)

southafrica@flowcrete.com

@flowcreteSA