

Mondéco Earth (8mm)

Mondéco Earth is a glossy, hygienic epoxy terrazzo floor finish containing granite and flint particles for a decorative, contemporary aesthetic.



Attractive:

Available in a range of bright colours with a luxurious, decorative finish.



Bespoke Design:

Can be laid in bespoke patterns for a truly unique application.



General Resistance:

High abrasion and chemical resistance properties.



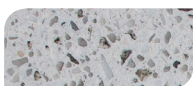
Easily Cleaned:

Minimal joints makes this flooring easy to clean and maintain.



Lifecycle Cost Efficiencies:

Offers significant lifecycle cost savings compared to tile or vinyl floor finishes.



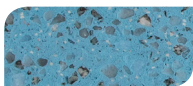
Snow



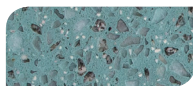
Pebble



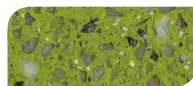
Greystone



Moonstone



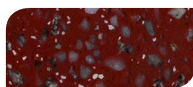
Sea Green



Spring Green



Coral



Ruby

The applied colours may differ from the examples shown. For a full colour chart and samples, contact your regional Flowcrete office.

Technical Profile

FIRE RESISTANCE

BS476-7: Spread of Flame Class 2

SLIP RESISTANCE

TRRL Pendulum Slip Test Dry >40
Low slip potential

TEMPERATURE RESISTANCE

Tolerant of sustained temperatures up to 60°C

IMPACT RESISTANCE

BS8204-1 Cat A (0.5mm)

COMPRESSIVE STRENGTH

BS6319 >55 N/mm²

FLEXURAL STRENGTH

BS6319 >20 N/mm²

TENSILE STRENGTH

BS6319 >10 N/mm²

BOND STRENGTH

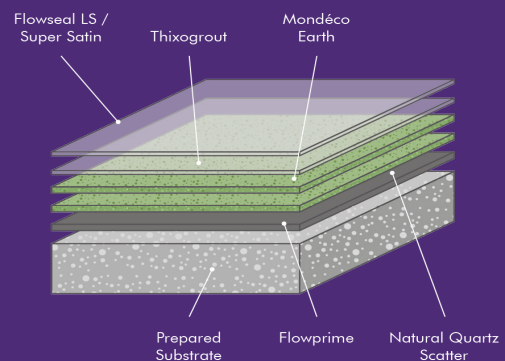
> 1.5 MPa

WATER PERMEABILITY

Karsten Test Nil (Impermeable)

SPEED OF CURE**	10 °C	20 °C	30 °C
Light Traffic	24 hrs	20 hrs	16 hrs
Full Traffic	72 hrs	48 hrs	36 hrs
Full Chemical Cure	12 days	7 days	6 days

**Assumes concrete compressive strength is greater than 25N/mm²



**Cure times at temperatures between 0-30 °C can be achieved by altering the quantity of catalyst used. For applications falling outside of this temperature range, please contact your local Flowcrete Technical Department.

Model Specification

System	Mondéco Earth
Finish	Semi gloss
Thickness	8mm
Colour	See standard colour chart
Manufacturer	Flowcrete SA (Pty) Ltd

Preparatory work and application in accordance with manufacturer's instructions.

Products Included In This System

Primer	Flowprime
Scatter	Scatter 3
Screed	Mondéco Earth
Grout	Thixo Grout
Top Coat	Flowcoat UV Clear
Sealcoat	Acrylic Sealer

Substrate Requirements

Concrete or screed substrate should be a minimum of 25 N/mm², free from laitence, dust and other contamination. Substrate should be dry to 75% RH as per BS8204.

Installation Service

The installation should be carried out by an Approved Flowcrete Applicator. For details of our Approved Applicators, contact your regional Flowcrete office. Detailed application instructions are available upon request.

Aftercare, Cleaning & Maintenance

Clean regularly using a single or double headed rotary scrubber drier in conjunction with a mildly alkaline detergent.

Environmental Considerations

The finished system is assessed as non-hazardous to health and the environment. The long service life and seamless surface reduce the need for repairs and maintenance. Environmental and health considerations are controlled during manufacture and application of the products by Flowcrete staff and fully trained application teams.

Focus on the Floorzone

Flowcrete is a market leader in specialist industrial and commercial flooring. Systems available include: floor screeds, surface damp proof membranes, decorative flooring, seamless terrazzo, car park deck coatings, tank lining systems... to name just a few. Our objective is to satisfy your Floorzone needs.

Warranty

Flowcrete products are guaranteed against defective materials and manufacture and are sold subject to our standard 'Warranty, Terms and Conditions of Sale', copies of which can be obtained on request. Warranty does not cover suitability, fit for purpose or any consequential or related damages. Please review warranty in detail before installing the products.

[07/11/18]