

## Peran STB (3-4mm)

A durable, decorative system consisting of coloured quartz granules encapsulated in a clear resin binder.



### Attractive:

Aesthetically appealing coloured quartz finish.



### Abrasion Resistance:

Holds its own against impact, traffic and chemical attack.



### Chemical Resistance:

Protects against the majority of chemicals.

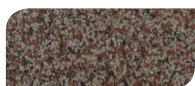


### Easy to Clean:

Minimal joints makes this flooring easy to maintain.



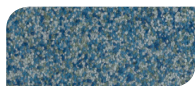
Sandstone



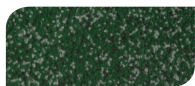
Chestnut



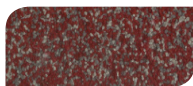
Gingerbread



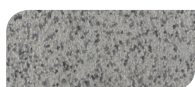
Dynamic Blue



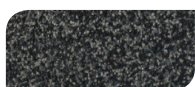
Emerald Green



Scarlet Red



Light Grey



Dark Grey



Charcoal

The applied colours may differ from the examples shown.  
For a full colour chart and samples, contact your regional Flowcrete office.

## Technical Profile

### SLIP RESISTANCE

BS 7976-2

Dry 59, Wet 35

### TEMPERATURE RESISTANCE

Tolerant of sustained temperatures up to 50°C

### ABRASION RESISTANCE

BS 8204-2

Class AR2  
Medium duty industrial  
and commercial

### IMPACT RESISTANCE

ISO 6272

1kg weight > 1.8m  
2kg weight > 1.5m

### COMPRESSIVE STRENGTH

BS 6319

>40 N/mm<sup>2</sup>

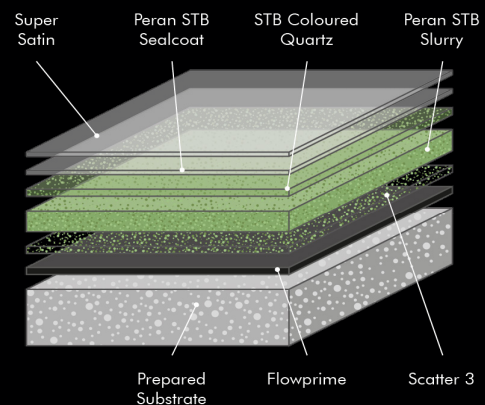
### FIRE RESISTANCE

SITAC

Class G  
Certificate No. 1721/75

SPEED OF CURE**	10°C	20°C	30°C
Light Traffic	36 hrs	18 hrs	12 hrs
Full Traffic	72 hrs	24 hrs	24 hrs
Full Chemical Cure	12 days	7 days	7 days

\*Assumes concrete compressive strength is greater than 25 N/mm<sup>2</sup>



\*\*Cure times at temperatures between 0-30°C can be achieved by altering the quantity of catalyst used.  
For applications falling outside of this temperature range, please contact your local Flowcrete Technical Department.

## Model Specification

<b>System</b>	Peran STB
<b>Finish</b>	Gloss or matt
<b>Thickness</b>	3-4mm
<b>Colour</b>	See standard colour chart
<b>Manufacturer</b>	Flowcrete SA (Pty) Ltd

Preparatory work and application in accordance with manufacturer's instructions.

## Products Included In This System

<b>Primer</b>	Flowprime
<b>Scatter</b>	Scatter 3
<b>Slurry</b>	Peran STB Slurry
<b>Topping</b>	STB Coloured Quartz
<b>Sealer</b>	Super Satin

## Substrate Requirements

Concrete or screed substrate should be a minimum of 25 N/mm<sup>2</sup>, free from laitence, dust and other contamination. Substrate should be dry to 75% RH as per BS8204.

## Installation Service

The installation should be carried out by an Approved Flowcrete Applicator. For details of our Approved Applicators, contact your regional Flowcrete office. Detailed application instructions are available upon request.

## Aftercare, Cleaning & Maintenance

Clean regularly using a single or double headed rotary scrubber drier in conjunction with a mildly alkaline detergent.

## Environmental Considerations

The finished system is assessed as non-hazardous to health and the environment. The long service life and seamless surface reduce the need for repairs and maintenance. Environmental and health considerations are controlled during manufacture and application of the products by Flowcrete staff and fully trained application teams.

## Focus on the Floorzone

Flowcrete is a market leader in specialist industrial and commercial flooring. Systems available include: floor screeds, surface damp proof membranes, decorative flooring, seamless terrazzo, car park deck coatings, tank lining systems... to name just a few. Our objective is to satisfy your Floorzone needs.

## Warranty

Flowcrete products are guaranteed against defective materials and manufacture and are sold subject to our standard 'Warranty, Terms and Conditions of Sale', copies of which can be obtained on request. Warranty does not cover suitability, fit for purpose or any consequential or related damages. Please review warranty in detail before installing the products.

[11/12/18]