

Flowcrete's Flooring Specification Roadmap

Your Guide to Specification Perfection

www.flowcretesa.co.za

STOP 1: SUBSTRATE

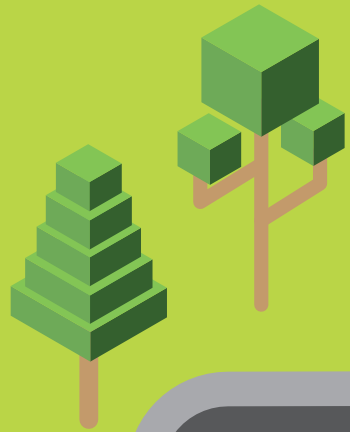
Failures due to substrate issues can cause billions of rands in losses annually.





STOP 2: FUNCTIONALITY

Considering how the final floor will be used is critical to avoid costly repairs or replacement in the future.



STOP 3: THERMAL CONDITIONS

Some polyurethane resin flooring can withstand cold temperatures up to -40°C .

STOP 4: TYPES OF TRAFFIC

A 60kg woman walking normally in high heels with a $\frac{1}{4}$ " round heel tip can generate more than 35mPa at the heel point for every step!



STOP 5: IMPACT REQUIREMENTS

A 5kg hammer dropped from 1 metre high has the impact force of 49kgs.



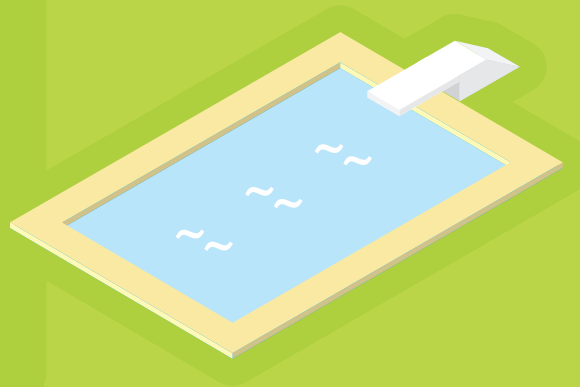


STOP 6: SLIP RESISTANCE

In South Africa slips, trips and falls make up 15% of all accidental deaths.

***STOP 7: UV
RESISTANCE***

South Africa
has some of
the highest
UV levels in
the world.

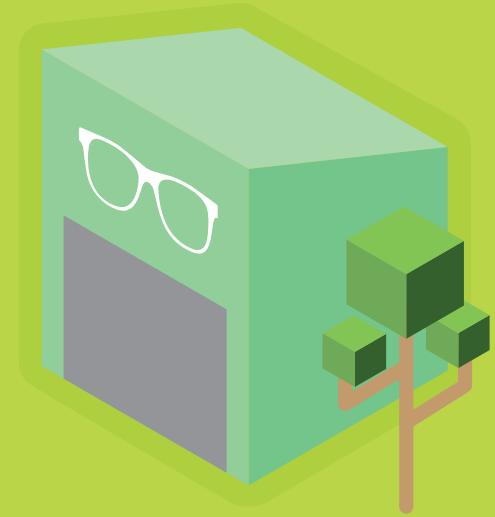




STOP 8: CLEANING

In healthcare facilities inappropriate cleaning techniques or devices may constitute an infection control risk.





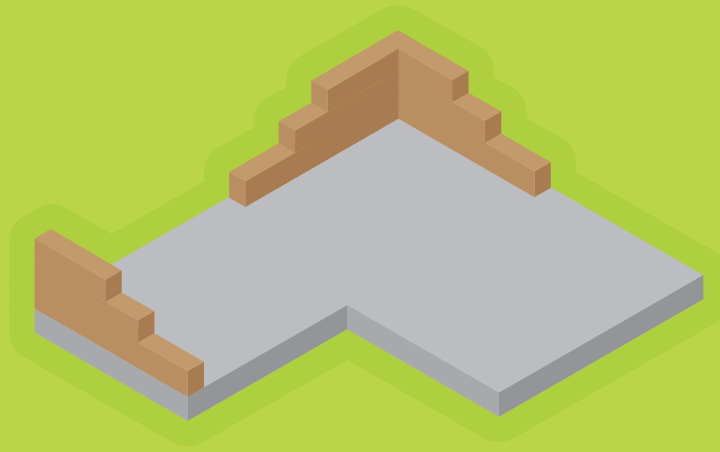
STOP 9: COLOUR AND DEMARCATION

92.6% of people said that they put most importance on visual factors when purchasing products.



STOP 10: COST

Generally floor coverings represent 7% of your total construction budget.



Flowcrete

for the world at your feet

Contact the Flooring Specialist:



+27 31 701 0017 (Westmead)



+27 21 385 0653 (Cape Town)



+27 11 394 1980 (Johannesburg)



saweb@flowcrete.com



www.flowcretesa.co.za



@flowcreteSA

www.flowcretesa.co.za