



COMMERCIAL FLOORING

Combine colour, performance and design to deliver a durable floor finish in commercial venues and retail environments.



Commercial Flooring Range



Flowcrete's Commercial Flooring range has been developed to deliver the ultimate in aesthetic appeal, without compromising on performance.

Available in a range of attractive smooth, flaked and stone finishes, our seamless resin flooring solutions provide an appealing surface underfoot.

Durable formulations take heavy footfall and exposure to detergents and corrosive agents in their stride, ideally suited to busy public venues that might be subject to spillages and daily cleaning regimes.

Added benefits of impressive slip resistance, noise reduction and versatility result in a range of flooring solutions ideally suited to a variety of commercial environments.

Application Suitability



Retail



Transport



Stadia



Education & Offices



Leisure



Healthcare

Standard Colours



The applied colours may differ from the examples shown. For a full colour chart and samples, contact your local Flowcrete office.



Technical Profile

SLIP RESISTANCE

TRRL Pendulum Slip Test

Dry >40, Wet depends on specification

TEMPERATURE RESISTANCE

Tolerant of sustained temperatures up to 70°C

ABRASION RESISTANCE

5mg loss per 1000 cycles (1kg load using CS17 wheels)

WATER PERMEABILITY

Karsten Test

Nil (Impermeable)

BOND STRENGTH

> 1.5 MPa concrete failure

FIRE RESISTANCE

BS 7976: Part 7
Surface spread of flame

Class 1

*These figures are typical properties achieved in laboratory tests at 20°C and at 50% Relative Humidity.

Metallic Expressions (0.8 - 2mm)

A decorative, hard wearing, polymer flooring system delivering a unique hand-crafted swirled metallic finish.

Ideal for use in public areas looking for a contemporary finish underfoot, such as designer outlets, showrooms, and exhibition areas, reception halls, bars, and casinos.



Attractive and unique finish



Hard-wearing and abrasion resistant



Low maintenance and easy-to-clean

Technical Profile

SLIP RESISTANCE	
TTRL Pendulum Slip Test	Dry 80, Wet 85
THERMAL RESISTANCE	
Tolerant of sustained temperatures up to 70°C	
ABRASION RESISTANCE	
Taber Abrader	5mg loss per 1000 cycles (1kg load using CS17 wheels)
BS 8204: Part 2	Grade AR2
WATER PERMEABILITY	
Karsten Test	Nil (Impermeable)
FIRE RESISTANCE	
BS 476: Part 7 Surface spread flame	Class 1
FLEXURAL STRENGTH	
>60 N/mm ²	

*These figures are typical properties achieved in laboratory tests at 20°C and at 50% Relative Humidity.

Flowflake Terroso (3 mm)

A seamless, decorative, and durable MMA resin finish comprising of a flake scatter in a pigmented resin before being sealed with a clear, resistant topcoat.

Ideal for high-traffic commercial spaces requiring fast installation, such as retail stores, restaurants, schools, airports, hospitals and stadiums.



Extensive design potential



Hygienic finish, and easy-to-clean



Resists abrasion and chemical attack



Flexible levels of slip resistance

Standard Colours



White Platinum



Sedona Snow



Silver Sage



Dakota Bronze



Mojave Beige

The applied colours may differ from the examples shown. For a full colour chart and samples, contact your local Flowcrete office.

Standard Colours

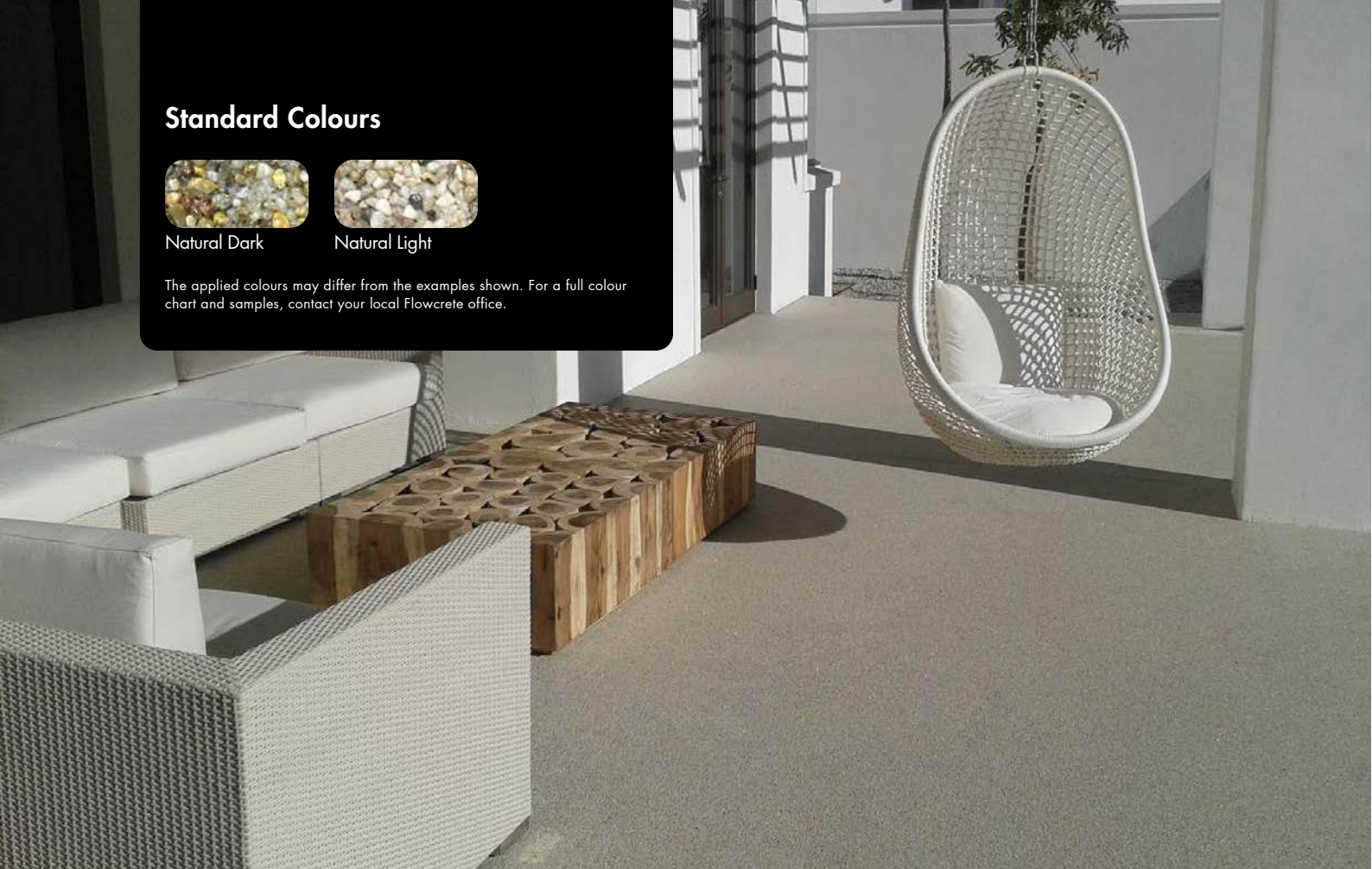


Natural Dark



Natural Light

The applied colours may differ from the examples shown. For a full colour chart and samples, contact your local Flowcrete office.



Technical Profile

SLIP RESISTANCE

BS 7976: Part 2

Dry 40, Wet 36

ABRASION RESISTANCE

BS 8204: Part 2

Class AR2 (Medium duty industrial and commercial)

IMPACT RESISTANCE

ISO 6272

1kg weight > 1.8 metres
2kg weight > 1.5 metres

TEMPERATURE RESISTANCE

Tolerant of sustained temperatures up to 50°C

COMPRESSIVE STRENGTH

BS 6319

50 N/mm²

FLEXURAL STRENGTH

BS 6319

10 N/mm²

BOND STRENGTH

>1.5 MPa

*These figures are typical properties achieved in laboratory tests at 20°C and at 50% Relative Humidity.

Rustik / Rustik UV (6mm)

A joint-free, slip-resistant floor finish comprising natural stones encapsulated in a clear resin binder.

Available in indoor and UV-stable outdoor options, this decorative system suits retail, offices, and commercial spaces needing a natural, elegant finish with ergonomic benefits.



Attractive, natural stone finish



Rapid installation



Hard-wearing and slip resistant



UV stable formulation available

Technical Profile

SLIP RESISTANCE	
BS 7976-2	Dry >40, Wet depends on specification
TEMPERATURE RESISTANCE	
Tolerant of sustained temperatures up to 50°C	
ABRASION RESISTANCE (RUSTIK)	
BS8204-2	Class AR2 (Medium duty industrial and commercial)
FIRE RESISTANCE	
EN 13501-1	C _f -s1
BOND STRENGTH	
>1.5 MPa*	
SPEED OF CURE	
Walk on	1 hour
Full traffic & chemical cure	2 - 3 hours

*Assumes concrete compressive strength is greater than 25 N/mm²

Flowfast Terrosso (3 mm)

A seamless, decorative MMA resin flooring system for fast-track projects.

Cures in as little as 1 hour - ideal for retail, restaurants, airports, stadiums, and other fast-paced environments needing minimal downtime.



Ultra-fast curing and installation



Decorative, high-impact finish



Versatile on various substrates



Durable and highly resistant

Standard Colours



Cobblestone



Desert Tan



Domino



Ice Blue



Green Bay



Midnight



Quicksilver



Scarlett

The applied colours may differ from the examples shown. For a full colour chart and samples, contact your local Flowcrete office.

Technical Profile

SLIP RESISTANCE

BS 7976: Part 2	Dry >50 (Low slip potential)
-----------------	------------------------------

THERMAL RESISTANCE

Tolerant of sustained temperatures up to 70°C

WATER PERMEABILITY

Karsten Test	Nil (Impermeable)
--------------	-------------------

COMPRESSION SET

97–99% recovery after 72 hrs at 50% compression at 20°C

COMPRESSION PROPERTIES

10% Modulus	7 kg/cm ² typical
-------------	------------------------------

50% Modulus	50 kg/cm ² typical
-------------	-------------------------------

ABRASION RESISTANCE

Taber Abrasion	Dry CS10/1000 cycles/1kg - 80mg Dry H18/1000 cycles/1kg - 400mg
----------------	--

BOND STRENGTH

Inter-coat bond strength >2.0MPa

*These figures are typical properties achieved in laboratory tests at 20°C and at 50% Relative Humidity.

For a full Technical Profile, contact your local Technical Department.

FlowSport (7mm)

A resilient, slip-resistant flooring system designed to enhance safety and performance in multi-use sports indoor sport venues.

Ideal for gyms, fitness centres, sports halls, and recreational areas, offering durable, vibrant flooring compatible with third-party line marking products.



Cushioned finish for high impact sport



Attractive bright colours and demarcation



Abrasion and impact resistant



Seamless, easy to clean and maintain

Standard Colours



Beige



Yellow



Signal Red



Forest Green



Tile Red



Dark Blue



Light Grey



Mid Grey



Dark Grey

The applied colours may differ from the examples shown. For a full colour chart and samples, contact your local Flowcrete office.



Standard Colours



Tamato



Kiwi



Tangerine



Grapefruit



Blueberry



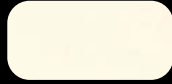
Spearmint



Pear



Plum



Magnolia



White

The applied colours may differ from the examples shown. For a full colour chart and samples, contact your local Flowcrete office.

Peran SL Fruity (2mm)

A glossy, durable, self-smoothing finish with a minimalist, contemporary aesthetic, showcasing a range of vivid colours.

Ideal for retail, schools, healthcare, offices, and hospitality spaces needing hygienic, long-lasting flooring that resists heavy traffic and chemical wear.



Attractive, brightly coloured finish



Resists impact, traffic and chemical attacks



Seamless and easy maintenance

Technical Profile

SLIP RESISTANCE

BS 7976: Part 2

Dry 67, Wet 26

TEMPERATURE RESISTANCE

Tolerant of sustained temperatures up to 50°C

ABRASION RESISTANCE

BS 8204: Part 2

Class AR2 (Medium duty industrial and commercial)

WATER PERMEABILITY

Karsten Test

Nil (Impermeable)

COMPRESSIVE STRENGTH

BS 6319

> 55 N/mm²

FIRE RESISTANCE

BS 476: Part 7
Surface spread of flame

Class 2

*These figures are typical properties achieved in laboratory tests at 20°C and at 50% Relative Humidity.

Technical Profile

SLIP RESISTANCE	
BS 7976: Part 2	Dry 59, Wet 35
TEMPERATURE RESISTANCE	
Tolerant of sustained temperatures up to 50°C	
ABRASION RESISTANCE	
BS 8204: Part 2	Class AR2 (Medium duty industrial and commercial)
IMPACT RESISTANCE	
ISO 6272	1kg weight > 1.8m 2kg weight > 1.5m
COMPRESSIVE STRENGTH	
SITAC	Class G Certificate No. 1721/75

*These figures are typical properties achieved in laboratory tests at 20°C and at 50% Relative Humidity.

Peran STB (3 - 4mm)

A durable, decorative, and slip-resistant flooring system made up of coloured quartz granules sealed within a clear resin binder.

Ideal for high-traffic areas like warehouses, manufacturing plants, laboratories, food processing, and retail environments, including both wet and dry processing zones.



Attractive coloured quartz finish



Minimal joints and easy to clean

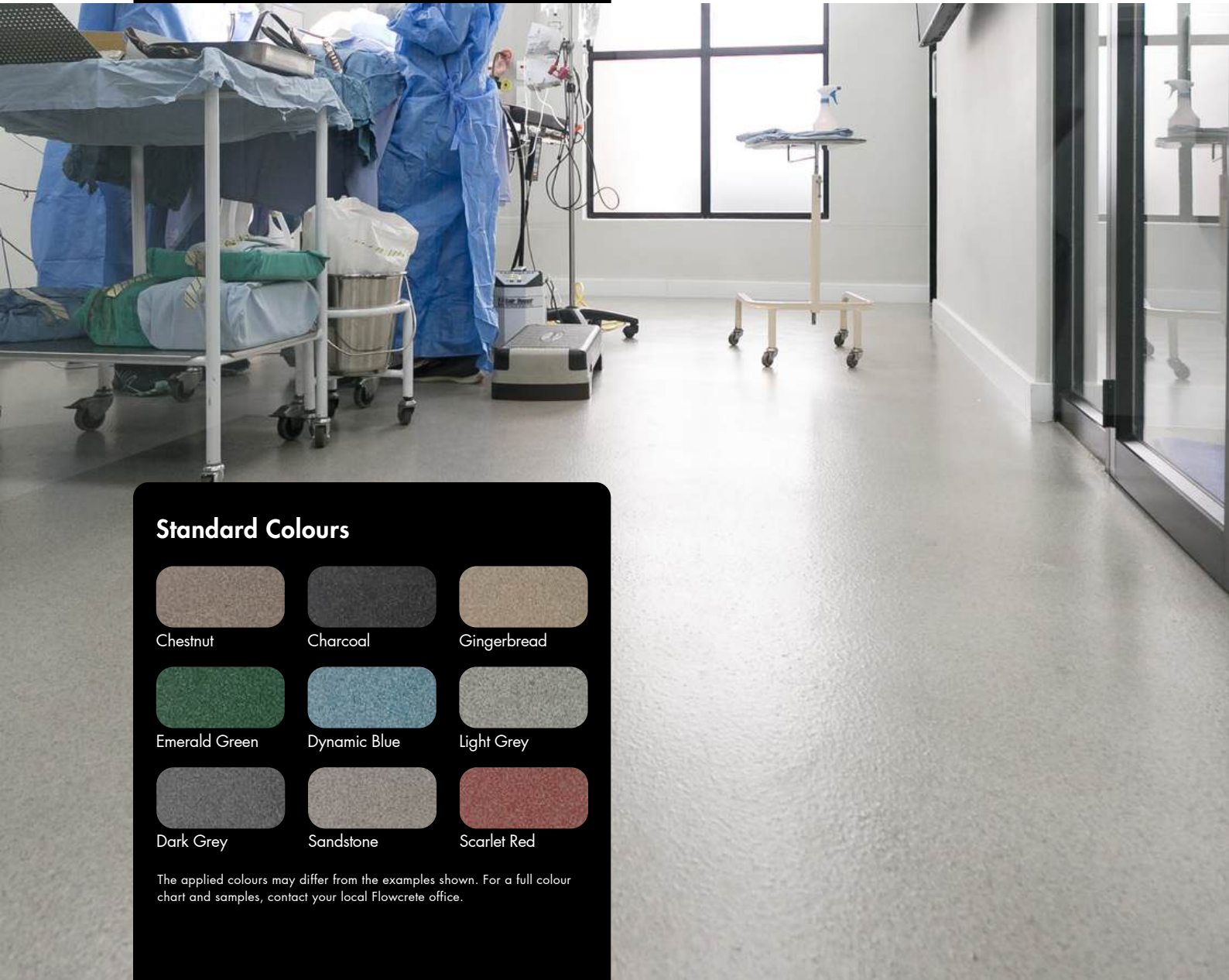


Resists impact, traffic and chemical attack

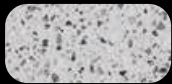
Standard Colours

Chestnut	Charcoal	Gingerbread
Emerald Green	Dynamic Blue	Light Grey
Dark Grey	Sandstone	Scarlet Red

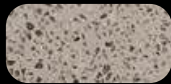
The applied colours may differ from the examples shown. For a full colour chart and samples, contact your local Flowcrete office.



Standard Colours



Snow



Pebble



Greystone



Moonstone



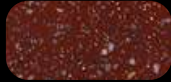
Sea Green



Spring Green



Coral



Ruby

The applied colours may differ from the examples shown. For a full colour chart and samples, contact your local Flowcrete office.

Technical Profile

FIRE RESISTANCE

BS 476: Part 7
Spread of flame

Class 2

SLIP RESISTANCE

TRRL Pendulum Slip Test

Dry >40 (Low slip potential)

TEMPERATURE RESISTANCE

Tolerant of sustained temperatures up to 60°C

IMPACT RESISTANCE

BS 8204: Part 1

Cat A (0.5mm)

COMPRESSIVE STRENGTH

BS 6319

55 N/mm²

BOND STRENGTH

>1.5 MPa

WATER PERMEABILITY

Karsten Test

Nil (Impermeable)

*These figures are typical properties achieved in laboratory tests at 20°C and at 50% Relative Humidity.

Mondéco Earth (8mm)

A glossy, hygienic epoxy terrazzo finish with granite and flint aggregates, offering custom patterns and superior durability over traditional flooring.

Ideal for high-traffic spaces like shopping centres, hotels, and airports, seeking a contemporary aesthetic with superior hygiene, where resistance to chemical attacks is key.



Attractive, customisable design options



Long term lifecycle cost efficiency



Minimal joints and easy to clean



High chemical and abrasion resistance

Technical Profile

FIRE RESISTANCE

BS 476: Part 7
Spread of flame

Class 2

SLIP RESISTANCE

TRRL Pendulum Slip Test

Dry >40 (Low slip potential)

TEMPERATURE RESISTANCE

Tolerant of sustained temperatures up to 60°C

FLEXURAL STRENGTH

BS 6319

20 N/mm²

COMPRESSIVE STRENGTH

BS 6319

55 N/mm²

BOND STRENGTH

>1.5 MPa

WATER PERMEABILITY

Karsten Test

Nil (Impermeable)

*These figures are typical properties achieved in laboratory tests at 20°C and at 50% Relative Humidity.

For a full Technical Profile, contact your local Technical Department.

Mondéco Crystal (8mm)

A decorative, solvent free terrazzo system with clear glass aggregates, offering style and durability for upscale environments.

Eye-catching floor finish ideal for retail stores, offices, reception halls, and other high-traffic commercial spaces where aesthetics and durability are key.



Decorative, high-impact finish



Long term lifecycle cost efficiency



Seamless, easy to clean and maintain



Bespoke design capabilities

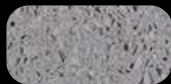
Standard Colours



Glacier



Nougat



Roman Silver



Bluebelle



Opal



Candy Apple



Cranberry



Cherry

The applied colours may differ from the examples shown. For a full colour chart and samples, contact your local Flowcrete office.

Standard Colours



Light Ivory



Light Blue



Signal Green



Signal Grey

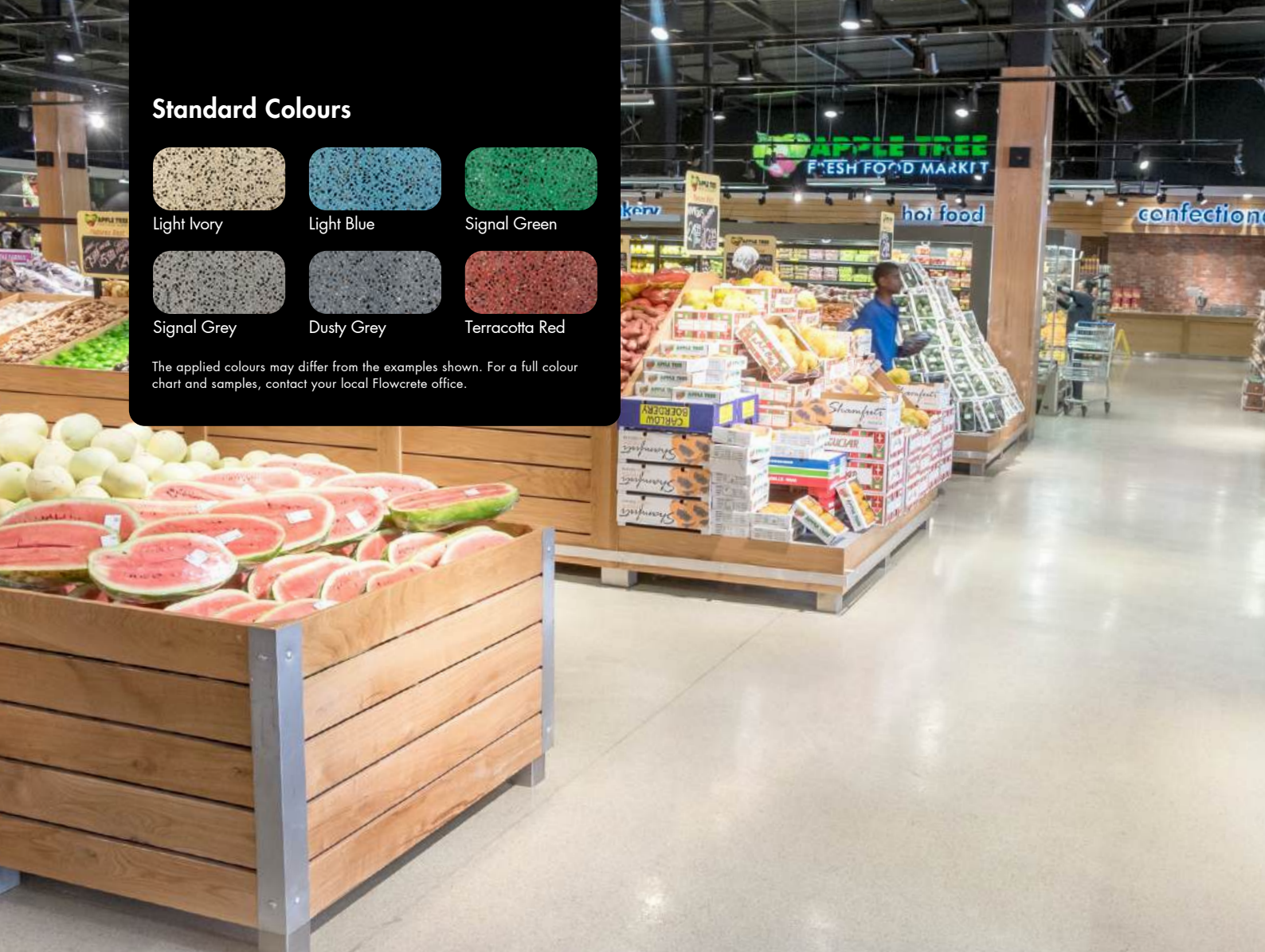


Dusty Grey



Terracotta Red

The applied colours may differ from the examples shown. For a full colour chart and samples, contact your local Flowcrete office.



Technical Profile

FIRE RESISTANCE

BS 476: Part 7
Spread of flame

Class 2

SLIP RESISTANCE

BS 7976: Part 2

Dry >40 (Low slip potential)

TEMPERATURE RESISTANCE

Tolerant to intermittent spillages up to 120°C or sustained dry heat from -40°C to 105°C (at 9mm thickness)

COMPRESSIVE STRENGTH

BS 6319

>55 N/mm²

ABRASION RESISTANCE

BS 8204: Part 2

20 mg loss per 1000 cycles
(1kg load using H22 wheels)

WATER PERMEABILITY

Karsten Test

Nil (Impermeable)

*These figures are typical properties achieved in laboratory tests at 20°C and at 50% Relative Humidity.

Mondéco TZ (8mm)

A unique textured, granite-filled antimicrobial polyurethane terrazzo system with high-temperature resistance and steam-cleanable properties.

Ideal for high-traffic areas like commercial kitchens and food plants exposed to hot fluid spillages, steam cleaning, impact, and chemicals attacks.



Excellent thermal shock resistance



Seamless and hygienic finish



Highly resistant to chemicals



Long term lifecycle cost efficiency

APPLE TREE
FRESH FRUIT & VEG
HOT SPECIALS
ECONOMY
RED APPLES
10 GOLDEN
10 PEARS
25
100g

APPLE TREE
FRESH FRUIT & VEG
HOT SPECIALS
ORANGES
2.99
1kg





Flowcrete

World leader in seamless resin flooring solutions and other specialist coatings.

Africa

South Africa	+27 11 254 5500	southafrica@flowcrete.com
--------------	-----------------	---------------------------

Asia Pacific (APAC)

Australia	+61 7 3205 7115	australia@flowcrete.com
Bangladesh	+603 6277 9575	bangladesh@flowcrete.com
Hong Kong	+852 2795 0478	hongkong@flowcrete.com
Indonesia	+62 21 252 3201	indonesia@flowcrete.com
Korea	+60 3 6277 9575	korea@flowcrete.com
Malaysia New	+60 3 6277 9575	asia@flowcrete.com
Zealand	+64 7 541 1221	newzealand@flowcrete.com
Pakistan	+60 3 6277 9575	pakistan@flowcrete.com
Philippines	+63 2 834 6506	philippines@flowcrete.com
Singapore	+65 6848 7166	singapore@flowcrete.com
Taiwan	+60 3 6277 9575	taiwan@flowcrete.com
Thailand	+66 2539 3424	thailand@flowcrete.com
Vietnam	+84 28 6287 0846	vietnam@flowcrete.com

Europe & Middle East (EME)

Bulgaria	+359 898 61 58 31	bulgaria@flowcrete.com
Denmark	+46 435 40 01 10	denmark@flowcrete.com
France	+33 1 60 61 74 42	france@flowcrete.com
Italy	+39 339 4853258	italy@flowcrete.com
Norway	+47 6486 0830	way@flowcrete.com
Poland	+48 22 879 8907	poland@flowcrete.com
Romania	+40 766 596 991 +7	romania@flowcrete.com
Russia	916 931 3513 +34	russia@flowcrete.com
Spain	937 07 0872 +46	spain@flowcrete.com
Sweden	435 40 01 10 +90	sweden@flowcrete.com
Turkey	212 2946570 +971 4	turkey@flowcrete.com
UAE	347 0460 +44 (0)	uae@flowcrete.com
UK	1270 753 000	uk@flowcrete.com

India

India	+91 44 40176600	india@flowcrete.com
-------	-----------------	---------------------

North America

Canada	+1 877-210-2444	canada@flowcrete.com
Mexico	+55 44 40 94 00	mexico@flowcrete.com
USA	+1 513-943-4225	americas@flowcrete.com

*Whilst every care has been taken to ensure that the information included in this document was accurate at the time of printing, Flowcrete reserves the right to change product specifications at any time without prior notice. The photographs and colours reproduced in this publication are within the constraints of the printing process and are not to be used for matching purposes. All photographs are used for approximate representation only and may not show the actual products on offer. E&OE.