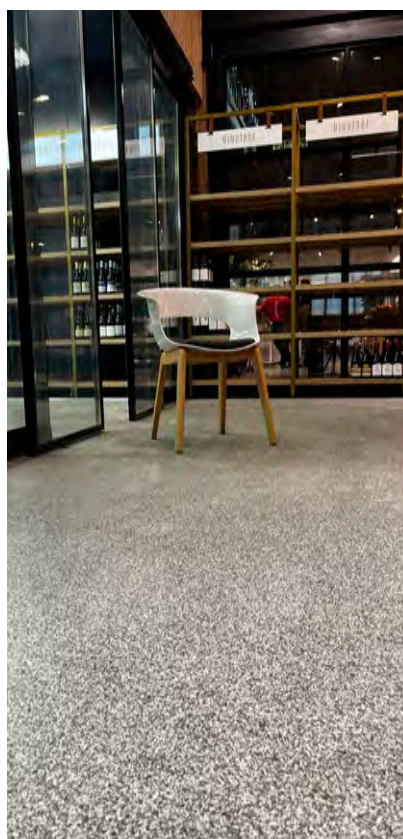




## FLOWFRESH

HACCP International certified antimicrobial cementitious polyurethane floor coating systems, ideal for use in areas where hygiene is critical.

# Flowfresh Range Technical Profile



Flowfresh represents a new generation of high-performance antibacterial flooring. Created in partnership with Polygiene®, Flowfresh harnesses natural silver to inhibit the growth of most types of harmful bacteria.

Silver is a natural element known for its ability to purify and protect from bacterial infections – and provides an attractive, environmentally friendly alternative to chemically manufactured antimicrobials.

**HACCP International certified** as safe for use in food processing environments, Flowfresh offers total protection. A continuous migration of silver ions are delivered to the contact surface from where they attack gram positive and gram negative bacteria and viruses. This technology remains active for the lifetime of the floor, even when damaged or worn unlike coatings or surface treatments.

Flowfresh meets the **ISO 22196** standard of evaluating the antimicrobial activity of antimicrobial treated plastics and other non-porous surfaces.



## Application Suitability



Food & Beverage



Meat & Fish



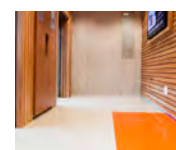
Bakeries & Confectionery



Food Preparation & Kitchens



Hospitals & Healthcare



Pharmaceutical Environments

## Resistance Chart

BACTERIAL RESISTANCE				CHEMICAL RESISTANCE*			
MRSA	✓	Salmonella Typhi	✓	Hydrochloric Acid	✓	Methanol	✓
E-coli	✓	Enterococcus Faecalis	✓	Sulphuric Acid	✓	Sugar Syrups	✓
Listeria	✓	Staphylococcus Aureus	✓	Citric Acid	✓	Caustic Soda	✓
C.difficile	✓	Streptococcus Pyogenes	✓	Acetic Acid	✓	Petrol	✓
Proteus Vulgaris	✓	Pseudomonas Aeruginosa	✓	Lactic Acid	✓	Oil Ingredients	✓
		Campila Bacta	✓	Phosphoric Acid	✓	Detergents	✓

\*A chemical resistance chart is available on request.

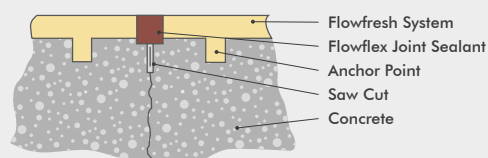


# Complementary Products

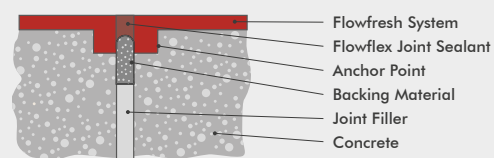
	DESCRIPTION	USES
<b>Flowprime</b>	A 2-component low viscosity epoxy resin primer for cementitious substrates.	Applied to screeds prior to overcoating with resin floor finishes.
<b>Flowfresh Primer</b>	A 3-component, polyurethane scratch coat/primer for concrete and cementitious substrates. Flowfresh Primer will bond to surface dry substrates that have a Relative Humidity up to 97% (to BS 8204).	For priming concrete and screeds, prior to overcoating with the Flowfresh flooring system.
<b>Flowfresh Coating</b>	A 4-component water based polyurethane coating.	Used as a sealer coat from Flowfresh WR or as an alternative sealer for Flowfresh HF.
<b>Super Satin</b>	A 2-component waterborne polyurethane formulated to provide an ultra-durable clear coating with a matt finish.	Used as a sealer coat where a matt finish is essential.
<b>STB Sealcoat</b>	A 2-component epoxy sealer with good UV stability.	Used as a UV stable sealer for flake and quartz broadcast systems. Or as a concrete coating with high abrasion & wear resistance.
<b>Hydraseal DPM</b>	A 2-component, solvent-free, epoxy resin primer for damp cementitious substrates with a Relative Humidity up to 100% (BS 8204).	Used as a primer for very damp substrates (with no visible surface moisture) where other primers are not suitable.
<b>Dymonic 100</b>	A single component moisture cured polyurethane joint sealant.	To strengthen and protect limited movement floor joints.

## Joint Details

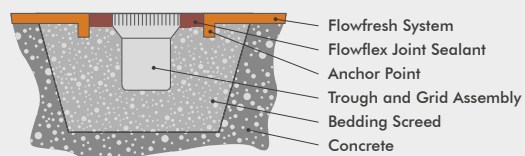
Typical (induced) Movement Joint



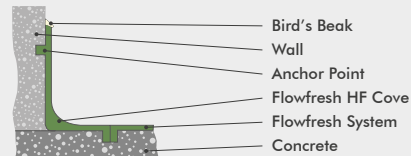
Typical (expansion) Movement Joint



Typical Drainage Channel Arrangement



Typical Floor to Wall Detail



# Flowfresh SL & MF (2–4mm)

Smooth, matt polyurethane screeds for use in dry areas subject to light-medium traffic.

Best suited to packaging areas and processing zones subject to light-medium foot and wheeled traffic, these trowel applied systems deliver a seamless joint-free finish.



### Chemical Resistant:

Protects against the majority of acids used in manufacturing processes.



### Abrasion Resistant:

Holds its own against impact, traffic and chemical attack.



### Hygienic:

Contains Polygiene® - an antimicrobial additive that kills up to 99.9% bacteria.



### Easy to Clean:

Minimal joints makes this flooring easy to sterilise.



### Low Odour:

Improved air quality during installation and beyond.

## Colours



Cream



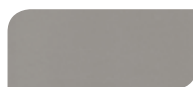
Yellow Ochre



Sand Yellow



Tomato Red



Signal Grey



Signal Green



Dusty Grey



Light Blue

The applied colours may differ from the examples shown. For a full colour chart and samples, contact your local Flowcrete office.

## Technical Profile

### THICKNESS

2mm (SL)  
3–4mm (MF)

### FIRE RESISTANCE

BS476-7

Class 2

### TEMPERATURE RESISTANCE

5°C to 65°C (SL)  
-5°C to 70°C (MF @ 3mm), -15°C to 90°C (MF @ 4mm)

### WATER PERMEABILITY

Karsten Test

Nil (Impermeable)

### SLIP RESISTANCE

TRRL Pendulum Slip Test

Dry >70  
Wet >25

### COMPRESSIVE STRENGTH

BS6319

>50 N/mm<sup>2</sup>

### FLEXURAL STRENGTH

BS6319

>20 N/mm<sup>2</sup>

### TENSILE STRENGTH

BS6319

>12 N/mm<sup>2</sup>

### BOND STRENGTH

>1.5 MPa\*

### COEFFICIENT OF THERMAL EXPANSION

ASTM C531

$5.70 \times 10^{-5} \text{ }^{\circ}\text{C}^{-1}$

### SPEED OF CURE

10°C

20°C

30°C

Light Traffic

36 hrs

24 hrs

12 hrs

Full Traffic

72 hrs

48 hrs

24 hrs

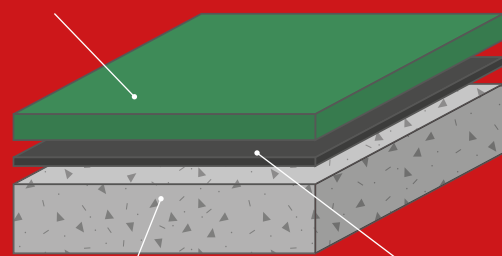
Full Chemical Cure

10 days

7 days

6 days

Flowfresh SL / MF



Prepared Substrate

Flowfresh Primer / Flowprime

\*Assumes concrete compressive strength is greater than 25N/mm<sup>2</sup>



## Application Suitability

Light - Medium Traffic 2 mm	✓
Medium - Heavy Traffic 4-6 mm	✓
Industrial Kitchens / Semi Dry Areas	✓
Packaging Areas	✓
Loading Bays	✓
Laboratories / Quality Control	✓
Dispensaries	✓
Cold Stores / Freezers	





## Application Suitability

Dry Process (Med/Heavy Traffic)	✓
Wet Process (Med/Heavy Traffic)	✓
Industrial Kitchens / Wash Areas	✓
Packaging Areas	
Chemical / Solvent Stores	✓
Loading Bays	✓
Laboratories / Quality Control	
Dispensaries	
Cold Stores / Freezers	✓



# Flowfresh RT (6–9mm)

A slip-resistant polyurethane screed for use in wet areas subject to high volumes of traffic.

Best suited to wet processing zones subject to high volumes of foot and wheeled traffic, this trowel applied 6–9mm system delivers a seamless joint-free matt finish.



### Heat Resistant:

Resistant to temperatures of up to 120°C.



### Slip Resistant:

Impressive anti-slip profile in dry and wet conditions.



### Hygienic:

Contains Polygiene® - an antimicrobial additive that kills up to 99.9% bacteria.



### Chemical Resistant:

Protects against the majority of acids used in manufacturing processes.



### Durable:

Holds its own against impact as well as heavy traffic.

## Colours



Cream



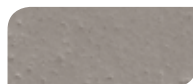
Yellow Ochre



Sand Yellow



Tomato Red



Signal Grey



Signal Green



Dusty Grey



Light Blue

## Technical Profile

### THICKNESS

6–9mm

### FIRE RESISTANCE

BS476-7

Class 2

### TEMPERATURE RESISTANCE

-25°C to 100°C (@ 6mm), -45°C to 120°C (9mm)

### WATER PERMEABILITY

Karsten Test

Nil (Impermeable)

### SLIP RESISTANCE

TRRL Pendulum Slip Test

Dry >80

Wet >35

### COMPRESSIVE STRENGTH

BS6319

>60 N/mm<sup>2</sup>

### FLEXURAL STRENGTH

BS6319

>20 N/mm<sup>2</sup>

### TENSILE STRENGTH

BS6319

>10 N/mm<sup>2</sup>

### BOND STRENGTH

>1.5 MPa\*

### COEFFICIENT OF THERMAL EXPANSION

ASTM C531

$3.74 \times 10^{-5} \text{ }^{\circ}\text{C}^{-1}$

### SPEED OF CURE

10°C

20°C

30°C

Light Traffic

36 hrs

24 hrs

12 hrs

Full Traffic

72 hrs

48 hrs

24 hrs

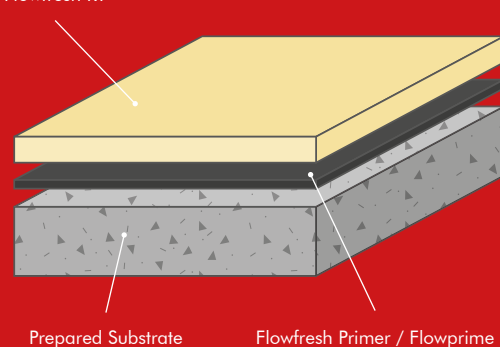
Full Chemical Cure

10 days

7 days

6 days

Flowfresh RT



\*Assumes concrete compressive strength is greater than 25N/mm<sup>2</sup>

The applied colours may differ from the examples shown. For a full colour chart and samples, contact your local Flowcrete office.



## Colours



Cream



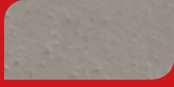
Yellow Ochre



Sand Yellow



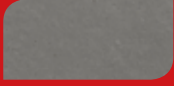
Tomato Red



Signal Grey



Signal Green



Dusty Grey



Light Blue

The applied colours may differ from the examples shown. For a full colour chart and samples, contact your local Flowcrete office.

## Technical Profile

### FIRE RESISTANCE

BS476-7

Class 2

### TEMPERATURE RESISTANCE

Intermittent Spillages: Up to 100°C  
Constant Heat: Up to 90°C

### WATER PERMEABILITY

Karsten Test

Nil (Impermeable)

### ABRASION RESISTANCE

ASTM D4060  
Taber Abrader (1kg load  
using H22 wheels)

25mg loss per 1000 cycles

### SPEED OF CURE

Light Traffic

10°C

36 hrs

20°C

24 hrs

30°C

12 hrs

Full Traffic

72 hrs

48 hrs

24 hrs

Full Chemical Cure

10 days

7 days

6 days

## Flowfresh WR (6–9mm)

Used for coving and wall rendering, Flowfresh WR is an antimicrobial, chemical resistant polyurethane.

The fine textured finish provides an attractive speckled finish while delivering high performance in wet or dry heavy duty food and beverage production environments.



Contains Polygiene® for hygiene



Resistant to hot steam cleaning



Impressive chemical resistance



Durable against impact and abrasion



## Technical Profile

### FIRE RESISTANCE

BS476-7

Class 2

### TEMPERATURE RESISTANCE

Up to 90°C

### WATER PERMEABILITY

Karsten Test

Nil (Impermeable)

### SLIP RESISTANCE

TRRL Pendulum Slip Test

Dry >56  
Wet >45 (dependent on aggregate)

### COMPRESSIVE STRENGTH

BS6319

>50 N/mm<sup>2</sup>

### FLEXURAL STRENGTH

BS6319

>20 N/mm<sup>2</sup>

### TENSILE STRENGTH

BS6319

>10 N/mm<sup>2</sup>

## Flowfresh Flakes (4mm)

Flowfresh Flakes is a decorative finish that provides an attractive yet highly functional floor.

The flaked finish is ideally suited to front-of-house and commercial environments where hygiene is critical.



Contains Polygiene® for hygiene



Decorative, flaked aesthetic



Slip, chemical and abrasion resistant



High performance, durable finish

## Colours



Domino



Cobblestone



Quicksilver



Scarlett



Desert Tan



Ice Blue



Green Bay



Midnight

The applied colours may differ from the examples shown. For a full colour chart and samples, contact your local Flowcrete office.

## Technical Profile

### FIRE RESISTANCE

BS476-7

Class 2

### TEMPERATURE RESISTANCE

Intermittent Spillages: Up to 100°C  
Constant Heat: Up to 75°C

### SLIP RESISTANCE

BS 6677-1

Pendulum Slip Test

Dry 100

Wet 70

### ABRASION RESISTANCE

ASTM D4060  
Taber Abrader (1kg load  
using H22 wheels)

25mg loss per 1000 cycles

### SPEED OF CURE

10 °C

20 °C

30 °C

Light Traffic

20 hrs

14 hrs

12 hrs

Full Traffic

24 hrs

18 hrs

12 hrs

Full Chemical Cure

7 days

5 days

5 days

## Flowfresh SR (4–5mm)

A high performance polyurethane system, incorporating a unique antimicrobial additive.

Flowfresh SR delivers a durable surface underfoot that resists intermittent temperatures of up to 122°C for an easy-to-clean, hygienic finish underfoot.



Contains Polygiene® for hygiene



Freeze/thaw resistant



Resistant to chemicals and traffic



Fast return to service

## Flowfresh SRQ (4–5mm)

An attractive coloured quartz system developed with tough and durable polyurethane hybrid technology.

Containing Polygiene®, Flowfresh SRQ is ideally suited to the food & beverage industry, including kitchens, manufacturing facilities and other heavy duty environments.



Contains Polygiene® for hygiene



Textured, anti-slip surface



Thermal shock resistant



Withstands high mechanical stress

## Technical Profile

### FIRE RESISTANCE

BS476-7

Class 2

### TEMPERATURE RESISTANCE

Intermittent Spillages: Up to 100°C  
Constant Heat: Up to 75°C

### WATER PERMEABILITY

Karsten Test

Nil (Impermeable)

### SLIP RESISTANCE

BS 6677-1

Pendulum Slip Test

Dry 100

Wet 70

### ABRASION RESISTANCE

ASTM D4060  
Taber Abrader (1kg load  
using H22 wheels)

25mg loss per 1000 cycles

### SPEED OF CURE

10 °C

20 °C

30 °C

Light Traffic

20 hrs

14 hrs

12 hrs

Full Traffic

24 hrs

18 hrs

12 hrs

Full Chemical Cure

7 days

5 days

5 days



## Flowfresh SR Ultra Colours



Cream



Yellow Ochre



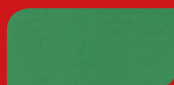
Sand Yellow



Tomato Red



Signal Grey



Signal Green



Dusty Grey



Light Blue

## Flowfresh SRQ Ultra Colours



Sandstone



Chestnut



Gingerbread



Dynamic Blue



Emerald Green



Scarlet Red



Light Grey



Dark Grey



Charcoal

The applied colours may differ from the examples shown.  
For a full colour chart and samples, contact your local  
Flowcrete office.



# Application Suitability

Dry Process (Med/Heavy Traffic)	
Wet Process (Med/Heavy Traffic)	
Industrial Kitchens / Wash Areas	
Packaging Areas	✓
Chemical / Solvent Stores	
Loading Bays	
Laboratories / Quality Control	✓
Dispensaries	✓
Cold Stores / Freezers	





## Mondéco TZ (7 mm)

A high temperature resistant, steam cleanable polyurethane terrazzo finish, ideal for floors subject to hot fluid spillages.

Suited for pharmaceutical, food and chemical process areas where floors are subject to steam cleaning, heavy traffic and chemical attack.



### Durable:

The durable properties of this range ensure a longer floor life span.



### Hygienic:

Contains Polygiene® - an antimicrobial additive that inhibits the growth of most types of harmful bacteria.



### Decorative:

Offers an attractive finish to enhance the working environment.



### Heat Resistant:

Resistant to temperatures of up to 120°C.



### Chemical Resistant:

Protects against the majority of acids used in manufacturing processes.



### Slip Resistant:

Impressive anti-slip profile in dry and wet conditions.

## Colours



Cream



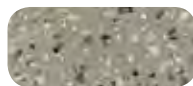
Mustard



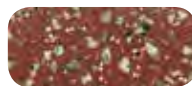
Dark Green



Ochre



Mid Grey



Tile Red

The applied colours may differ from the examples shown. For a full colour chart and samples, contact your local Flowcrete office.

## Technical Profile

### TEMPERATURE RESISTANCE

From -40°C to 105°C (sustained dry heat)  
Up to 120°C (intermittent spills)

### WATER PERMEABILITY

Karsten Test Nil-Impermeable

### FIRE RESISTANCE

EN 13501-1 B<sub>fl</sub>-s1

### SLIP RESISTANCE

BS 7976-2 Dry >40 low slip potential

### COMPRESSIVE STRENGTH

EN 13892-2 >55 N/mm<sup>2</sup>

### BOND STRENGTH

EN 13892-8 >2.0 N/mm<sup>2</sup>

### WEAR RESISTANCE

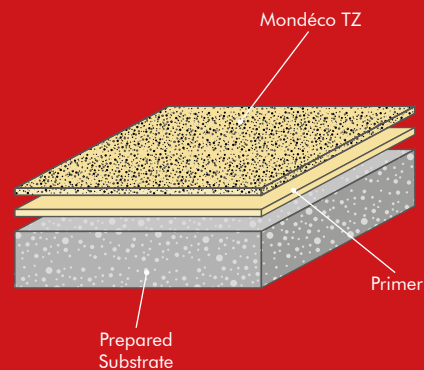
EN 13892-4 Max. wear depth <50 µm

### VAPOUR PERMEABILITY

2 g / m<sup>2</sup> / 8mm / 24 hr

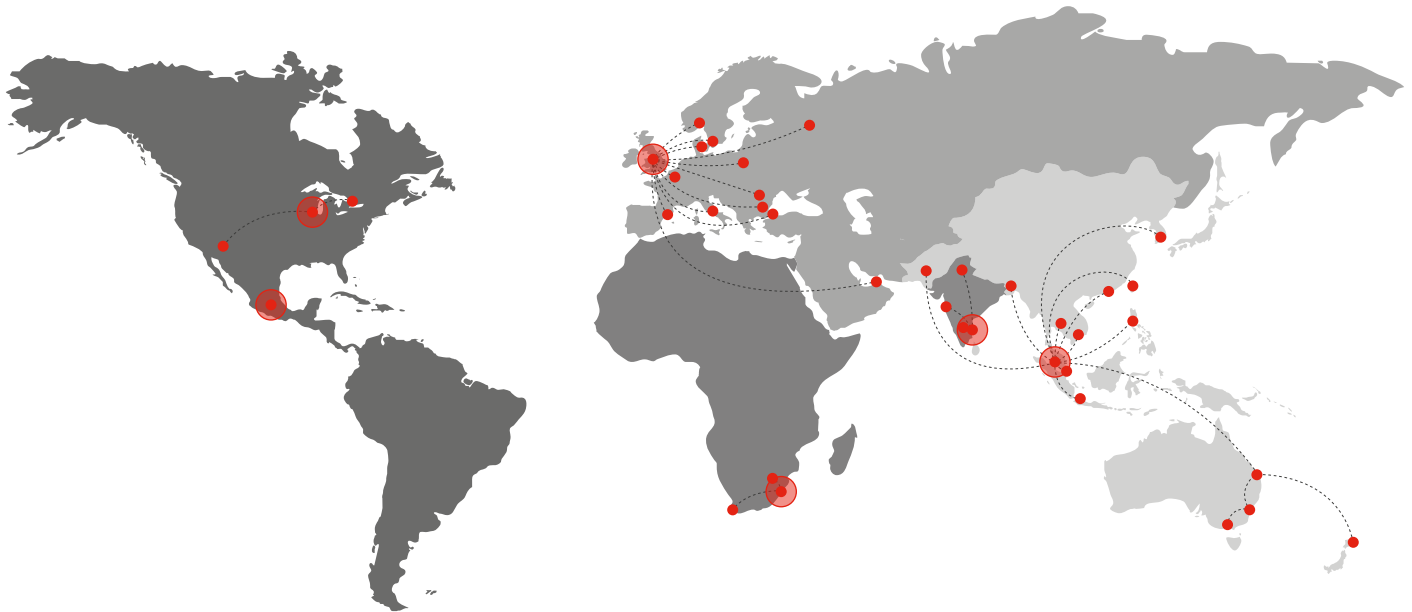
### SPEED OF CURE\*\*

	10 °C	20 °C	30 °C
Light Traffic	24 hrs	16 hrs	10 hrs
Full Traffic	72 hrs	48 hrs	36 hrs
Full Chemical Cure	12 days	7 days	7 days



\*Assumes concrete compressive strength is greater than 25N/mm<sup>2</sup>

\*\* Cure times at temperatures between 0-30 °C can be achieved by altering the quantity of catalyst used. For applications falling outside of this temperature range, please contact your local Flowcrete Technical Department.



## Flowcrete

World leader in seamless resin flooring solutions and other specialist coatings.

### Africa

South Africa	+27 11 254 5500	<a href="mailto:southafrica@flowcrete.com">southafrica@flowcrete.com</a>
--------------	-----------------	--

### Asia Pacific (APAC)

Australia	+61 7 3205 7115	<a href="mailto:australia@flowcrete.com">australia@flowcrete.com</a>
Bangladesh	+603 6277 9575	<a href="mailto:bangladesh@flowcrete.com">bangladesh@flowcrete.com</a>
Hong Kong	+852 2795 0478	<a href="mailto:hongkong@flowcrete.com">hongkong@flowcrete.com</a>
Indonesia	+62 21 252 3201	<a href="mailto:indonesia@flowcrete.com">indonesia@flowcrete.com</a>
Korea	+60 3 6277 9575	<a href="mailto:korea@flowcrete.com">korea@flowcrete.com</a>
Malaysia	+60 3 6277 9575	<a href="mailto:asia@flowcrete.com">asia@flowcrete.com</a>
New Zealand	+64 7 541 1221	<a href="mailto:newzealand@flowcrete.com">newzealand@flowcrete.com</a>
Pakistan	+60 3 6277 9575	<a href="mailto:pakistan@flowcrete.com">pakistan@flowcrete.com</a>
Philippines	+63 2 834 6506	<a href="mailto:philippines@flowcrete.com">philippines@flowcrete.com</a>
Singapore	+65 6848 7166	<a href="mailto:singapore@flowcrete.com">singapore@flowcrete.com</a>
Taiwan	+60 3 6277 9575	<a href="mailto:taiwan@flowcrete.com">taiwan@flowcrete.com</a>
Thailand	+66 2539 3424	<a href="mailto:thailand@flowcrete.com">thailand@flowcrete.com</a>
Vietnam	+84 28 6287 0846	<a href="mailto:vietnam@flowcrete.com">vietnam@flowcrete.com</a>

## Europe & Middle East (EME)

Bulgaria	+359 898 61 58 31	<a href="mailto:bulgaria@flowcrete.com">bulgaria@flowcrete.com</a>
Denmark	+46 435 40 01 10	<a href="mailto:denmark@flowcrete.com">denmark@flowcrete.com</a>
France	+33 1 60 61 74 42	<a href="mailto:france@flowcrete.com">france@flowcrete.com</a>
Italy	+39 339 4853258	<a href="mailto:italy@flowcrete.com">italy@flowcrete.com</a>
Norway	+47 6486 0830	<a href="mailto:norway@flowcrete.com">norway@flowcrete.com</a>
Poland	+48 22 879 8907	<a href="mailto:poland@flowcrete.com">poland@flowcrete.com</a>
Romania	+40 766 596 991	<a href="mailto:romania@flowcrete.com">romania@flowcrete.com</a>
Russia	+7 916 931 3513	<a href="mailto:russia@flowcrete.com">russia@flowcrete.com</a>
Spain	+34 937 07 0872	<a href="mailto:spain@flowcrete.com">spain@flowcrete.com</a>
Sweden	+46 435 40 01 10	<a href="mailto:sweden@flowcrete.com">sweden@flowcrete.com</a>
Turkey	+90 212 2946570	<a href="mailto:turkey@flowcrete.com">turkey@flowcrete.com</a>
UAE	+971 4 347 0460	<a href="mailto:uae@flowcrete.com">uae@flowcrete.com</a>
UK	+44 (0) 1942 251 400	<a href="mailto:flooringuk@cpg-europe.com">flooringuk@cpg-europe.com</a>

### India

India	+91 44 40176600	<a href="mailto:india@flowcrete.com">india@flowcrete.com</a>
-------	-----------------	--

## North America

Canada	+1 877-210-2444	<a href="mailto:canada@flowcrete.com">canada@flowcrete.com</a>
Mexico	+55 44 40 94 00	<a href="mailto:mexico@flowcrete.com">mexico@flowcrete.com</a>
USA	+1 513-943-4225	<a href="mailto:americas@flowcrete.com">americas@flowcrete.com</a>